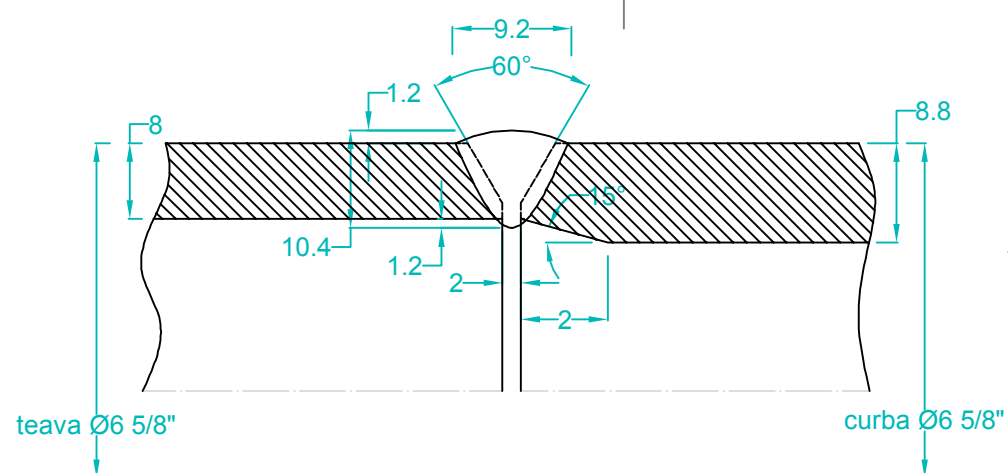
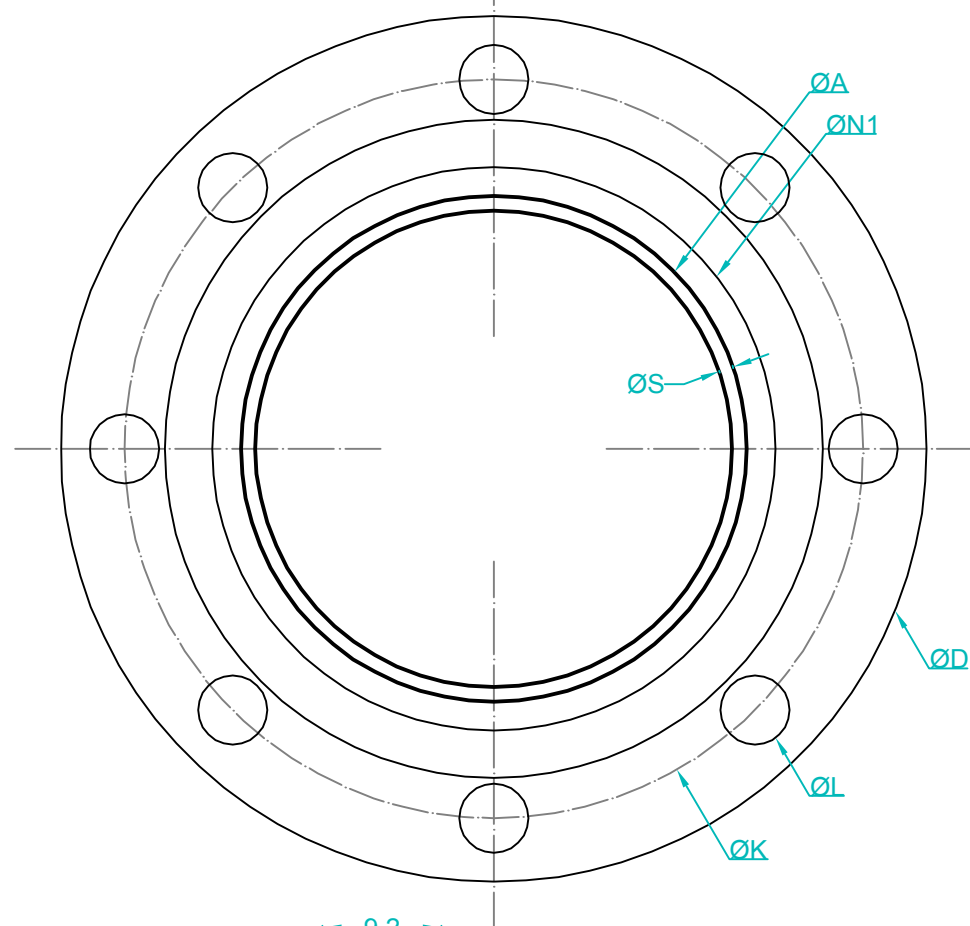
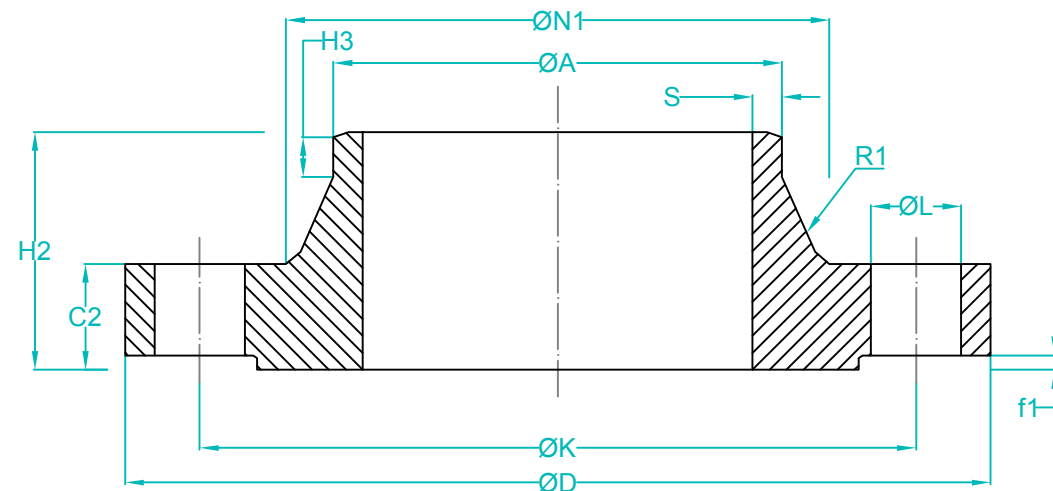


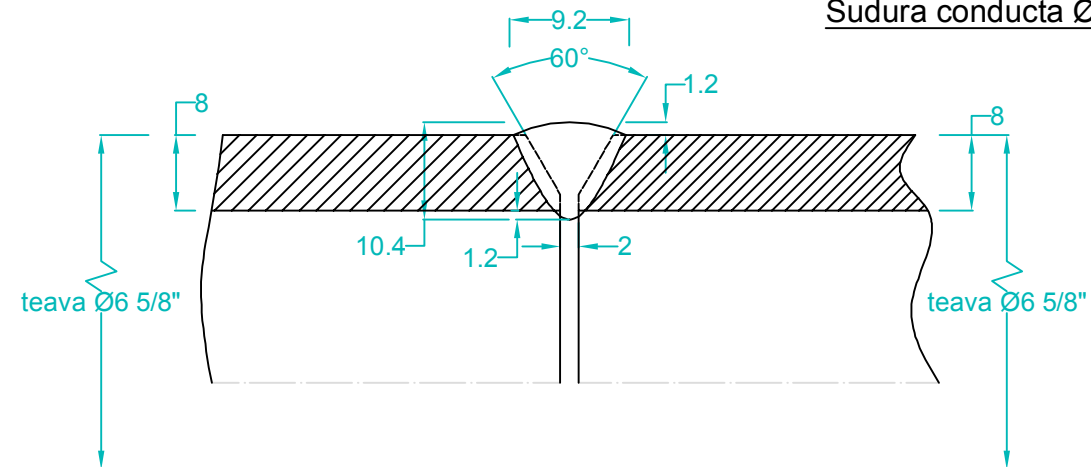
# Dimensiuni flansa SR EN 1092-1+A1:2013 cu gat sudabil



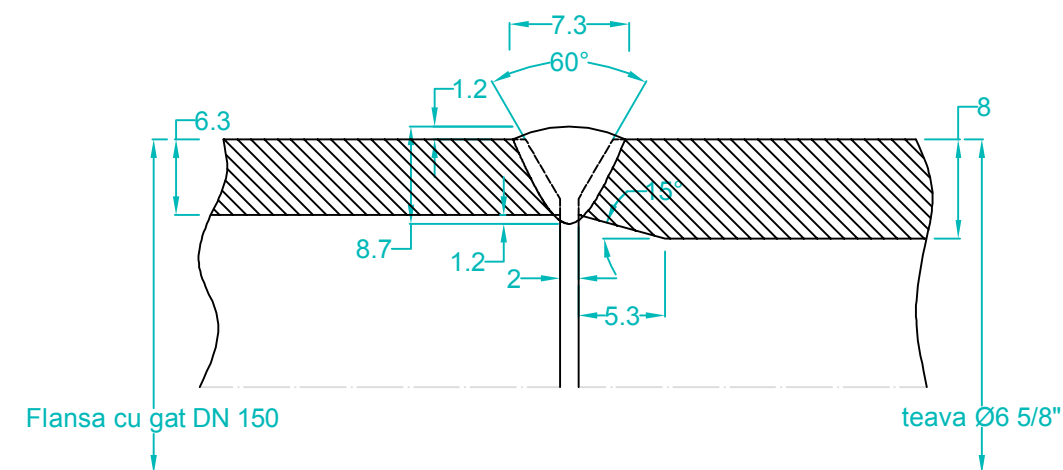
Sudura conducta  
Ø6 5/8" - curba Ø6 5/8"

## DETALII SUDURI

Sudura conducta Ø6 5/8" - conducta Ø6 5/8"



Sudura flansa cu gat Dn 150 - conducta Ø6 5/8"



Flansa cu gat DN 150

teava Ø6 5/8"

## Dimensiuni montare

| DN  | Diametre      |            |             | Suruburi |     | Diametru exterior gat sudabil | Grosime | Suprafata | Masura |    | Diametru gat de baza | Raza | Grosimea gatului | Masa net |
|-----|---------------|------------|-------------|----------|-----|-------------------------------|---------|-----------|--------|----|----------------------|------|------------------|----------|
|     | Exterior (mm) | Cerc surub | Gaura surub | Nr.      | Tip |                               |         |           | H2     | H3 |                      |      |                  |          |
| mm  | D             | K          | L           |          |     | A                             | C2      | f1        |        |    | N1                   | R1   | S                | Kg       |
| 150 | 345           | 280        | 33          | 8        | M30 | 168,3                         | 36      | 2         | 95     | 12 | 202                  | 10   | 6.3              | 21.40    |

Verificator/  
Expert

Nume

Semnatura

Cerinta

Referat / Expertiza Nr. / Data

S.C. SNIF PROIECT S.A. Targoviste  
Numar de inmatriculare J15/925/2005

Beneficiar:  
S.C. CONPET S.A. PLOIESTI

Pr. nr.  
304

Specificatie

Nume

Semnatura

Scara:

"Inlocuire conducta de transport titei Ø5 9/16" Statie  
Ghelinta - Rampa Imeci pe tronsonul Pârâu Sohodol  
- depozit vechi Ghelinta, in lungime de cca. 4.800m"

Faza  
PT+CS+D

Desenat

Ing. Radu Florin

Data:

- Detalii suduri  
- Dimensiuni flansa cu gat sudabil Dn 150

Pl. nr.  
24